

# Mantle Installation Instructions

(Please read all instructions before beginning)

## Required tools and materials



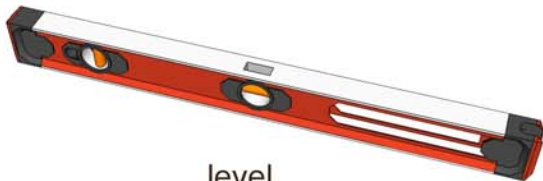
power hammer drill  
with 1/8" and 3/8"  
masonry drill bits



circular saw or angle  
grinder with masonry blade



caulk gun



level



tape measure

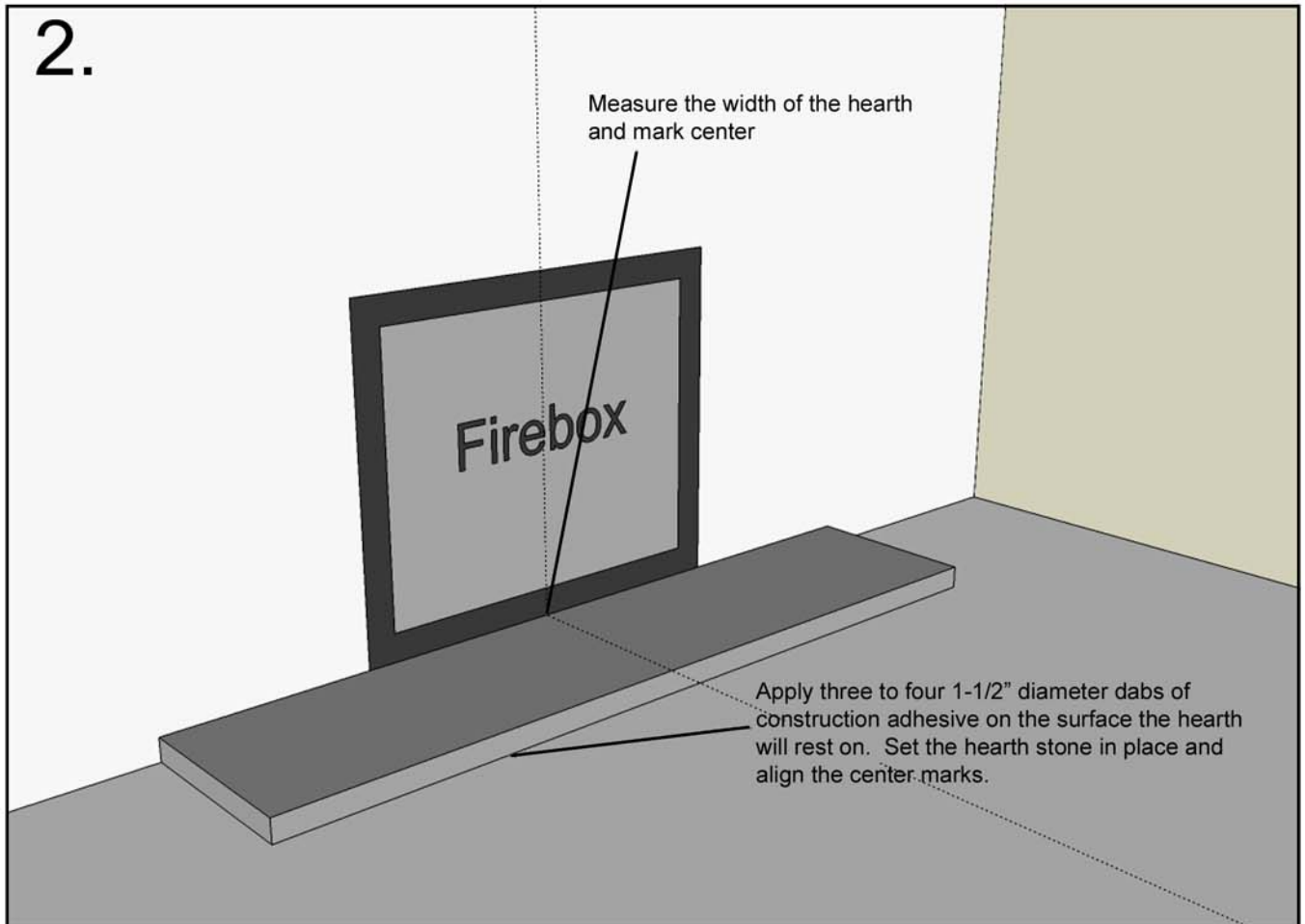
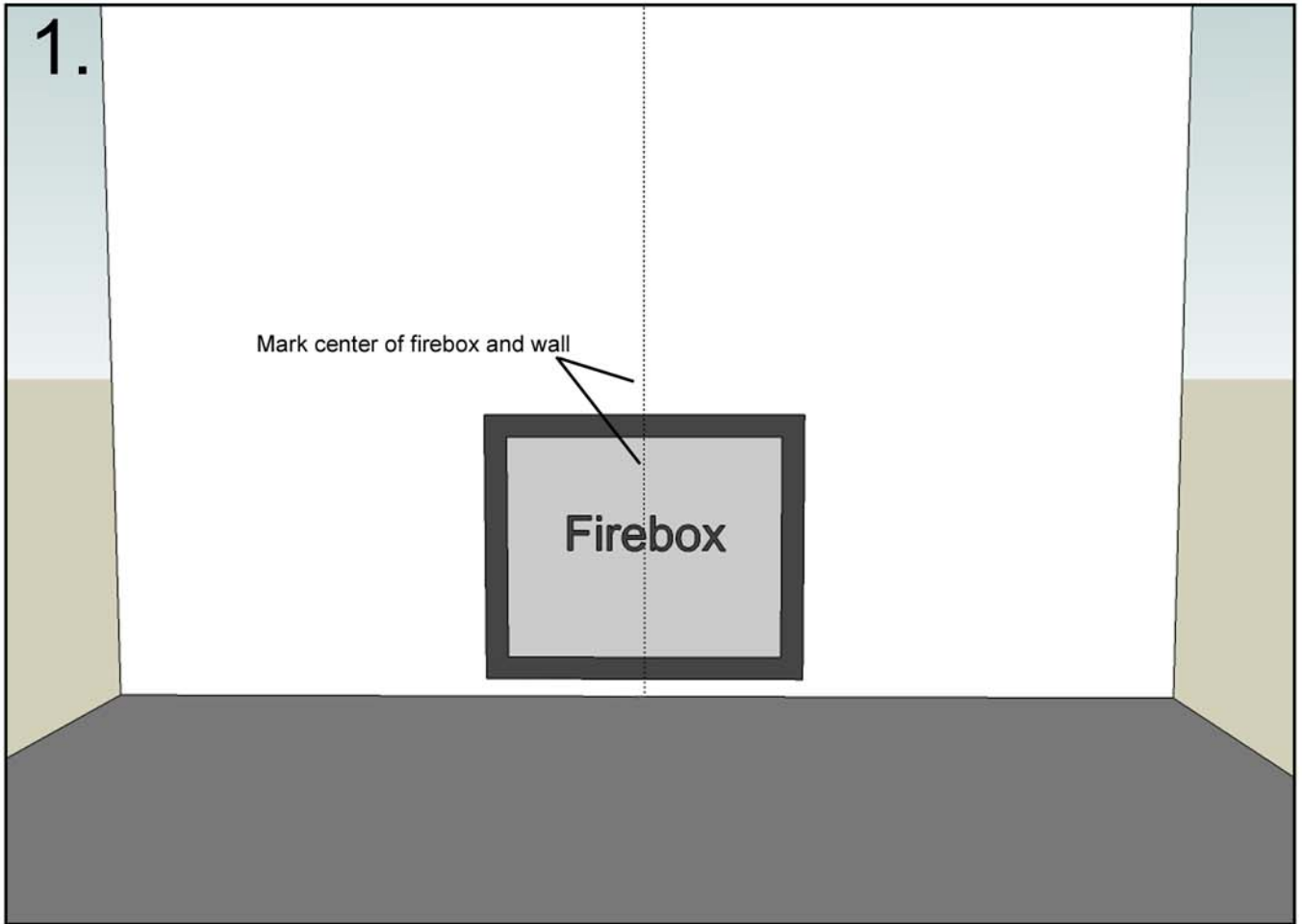


3" - 4" long  
wood screws

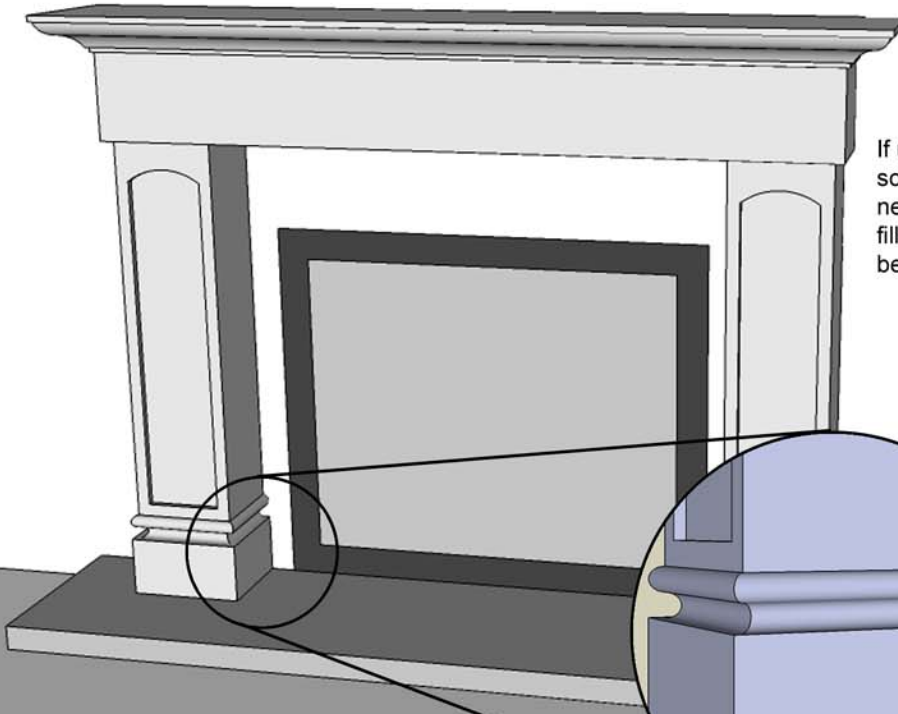
Additional tools and materials: shims to level mantle, construction adhesive, caulk, grout bag, and sanded tile grout.

**Note:** Supplied is a patch kit for repairing chips and cracks and for filling screw holes. For seams use a tile grout. We recommend using **Custom Building Products** sanded grout available at **Home Depot**. For mantles cast in colors Light Buff or Sahara use grout color Linen. For mantles cast in Linen use grout color Antique White. For mantles cast in Stoney Ground use grout color Oyster Gray.

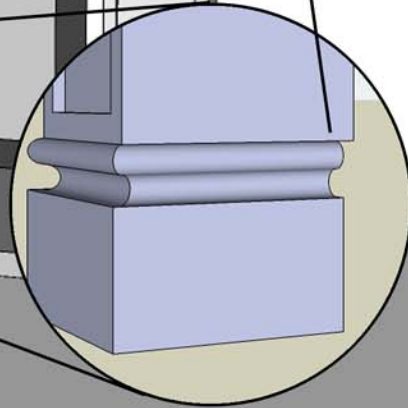
- Handle products with care to avoid damaging details on the mantle.
- Test fitting the mantle is recommended before drilling, cutting, or applying adhesive.



3.



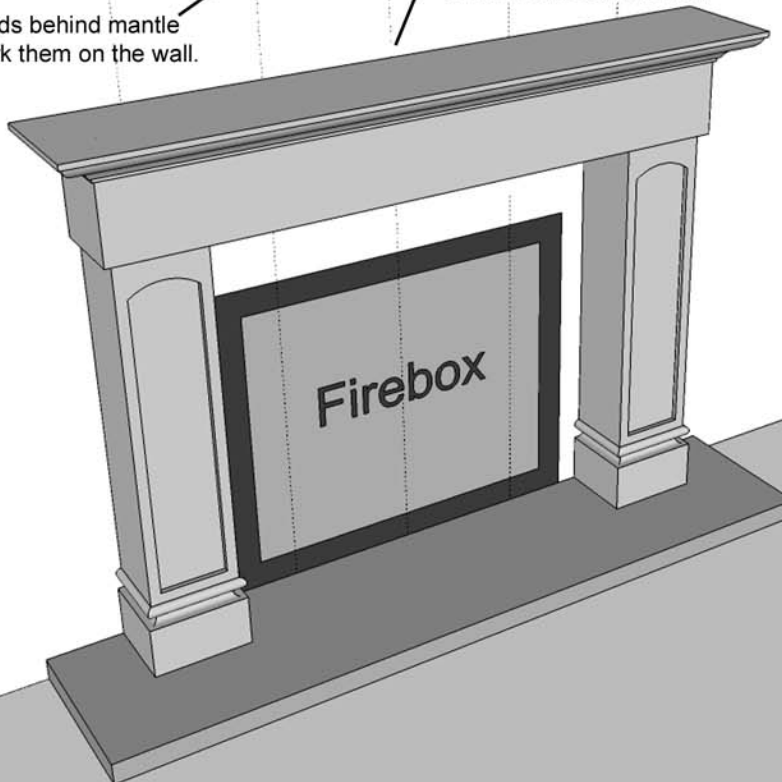
If using our 3/4" filler material, some areas of the mantel will need to be notched so the filler material can slide behind.



4.

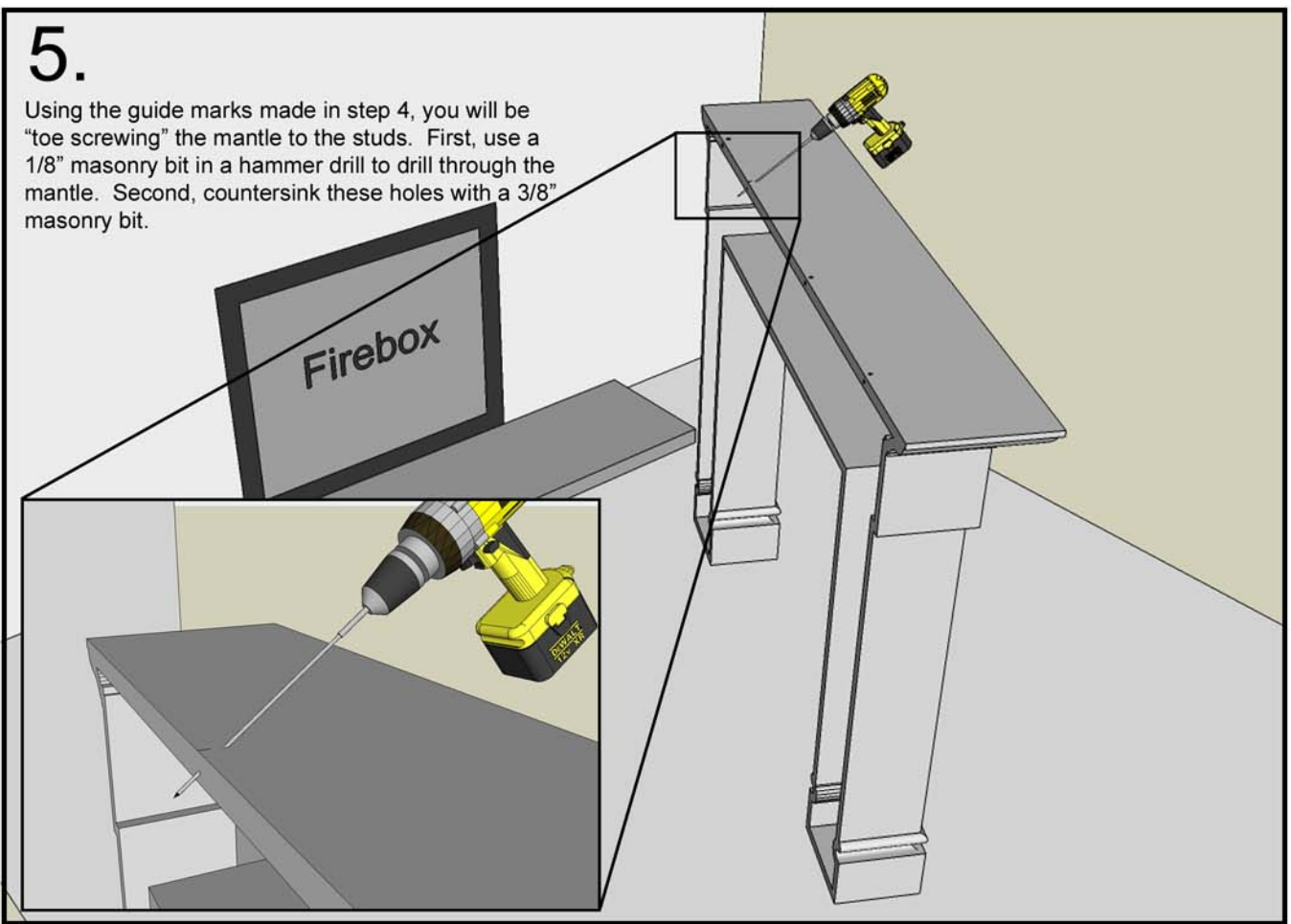
Find studs behind mantle and mark them on the wall.

Test fit the mantle on the wall. Center the mantle on the firebox and add shims if needed to level the mantle. Mark the stud locations on the mantle and the position of the mantle on the wall.



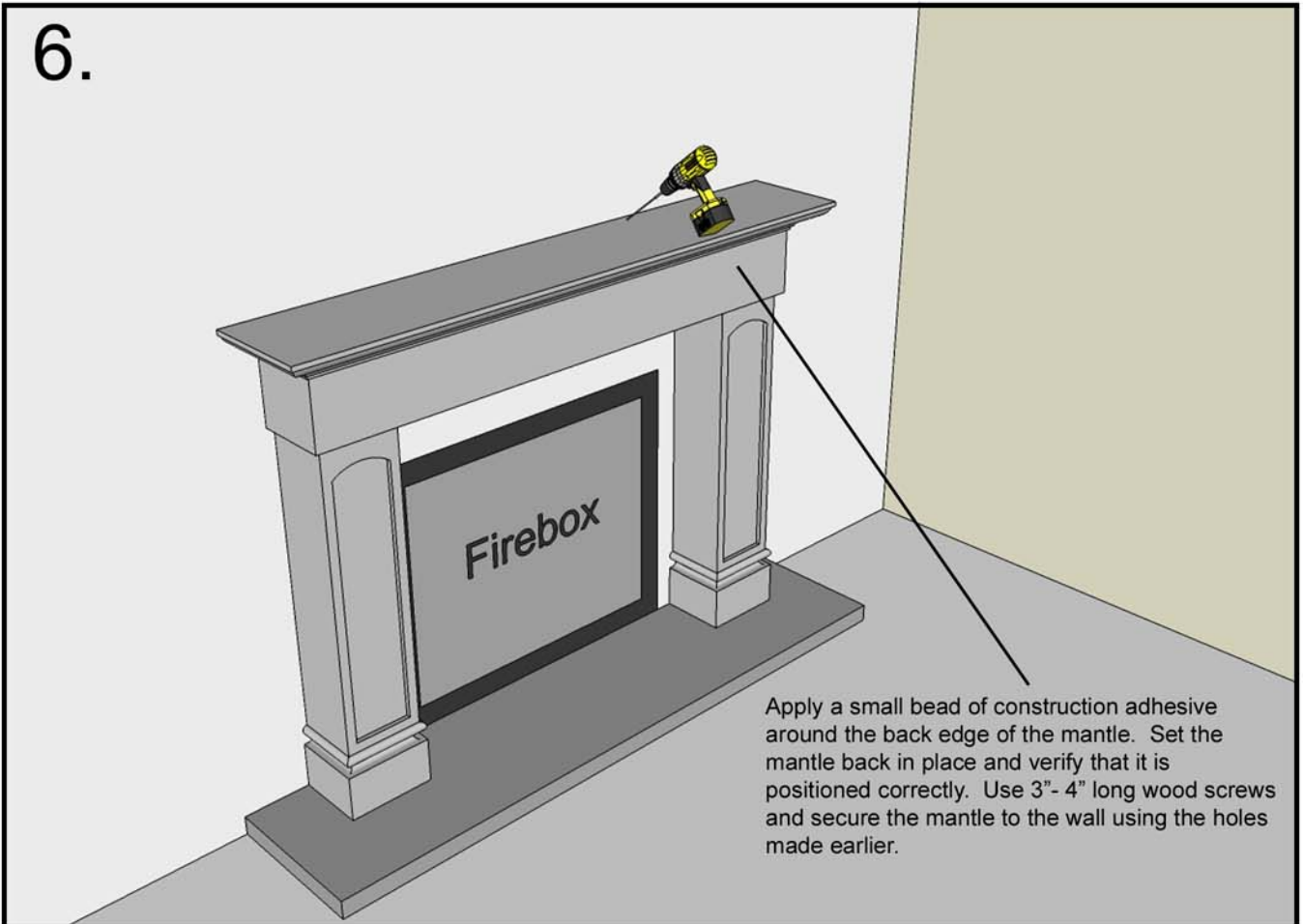
# 5.

Using the guide marks made in step 4, you will be "toe screwing" the mantle to the studs. First, use a 1/8" masonry bit in a hammer drill to drill through the mantle. Second, countersink these holes with a 3/8" masonry bit.



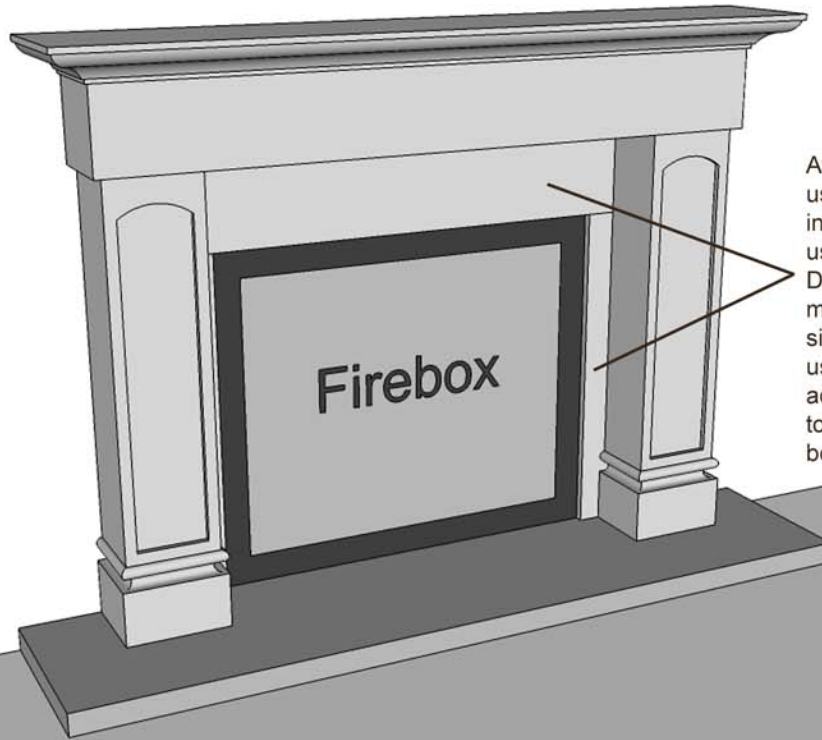
# 6.

Apply a small bead of construction adhesive around the back edge of the mantle. Set the mantle back in place and verify that it is positioned correctly. Use 3"- 4" long wood screws and secure the mantle to the wall using the holes made earlier.





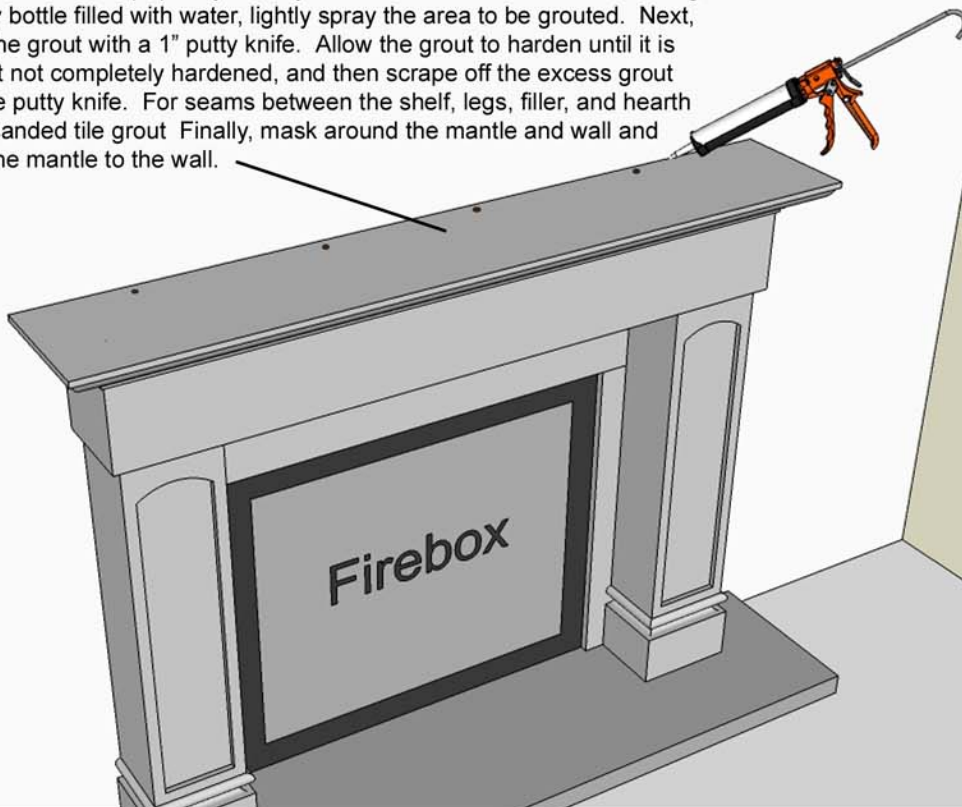
7.



After the mantel is set use a filler material to fill in around the firebox. If using Distinctive Mantle Designs 3/4" filler material, cut to the proper size and install the liners using construction adhesive in this order; top, sides, and then bottom.

8.

The Next step is to grout the seams, joints, and screw holes of the mantel and caulk the mantel to the wall. Use the supplied patch material to fill screw holes and repair any chips. Mix the patch with water to form a paste, this will set up quickly so only mix a small amount at a time. Using a spray bottle filled with water, lightly spray the area to be grouted. Next, apply the grout with a 1" putty knife. Allow the grout to harden until it is firm but not completely hardened, and then scrape off the excess grout with the putty knife. For seams between the shelf, legs, filler, and hearth use a sanded tile grout. Finally, mask around the mantel and wall and caulk the mantel to the wall.



9.

After the grout is dry, use a damp sponge and wipe away any residue left by the grout. Use 150 grit sandpaper to sand off shoe marks or scuff marks. Lastly, seal the hearth and the top of the shelf with siloxane.

